

2.00 PURPOSE:

The purpose of this policy is to identify the chain of command and reporting structure for the District

2.01 SCOPE:

This policy applies to all department personnel.

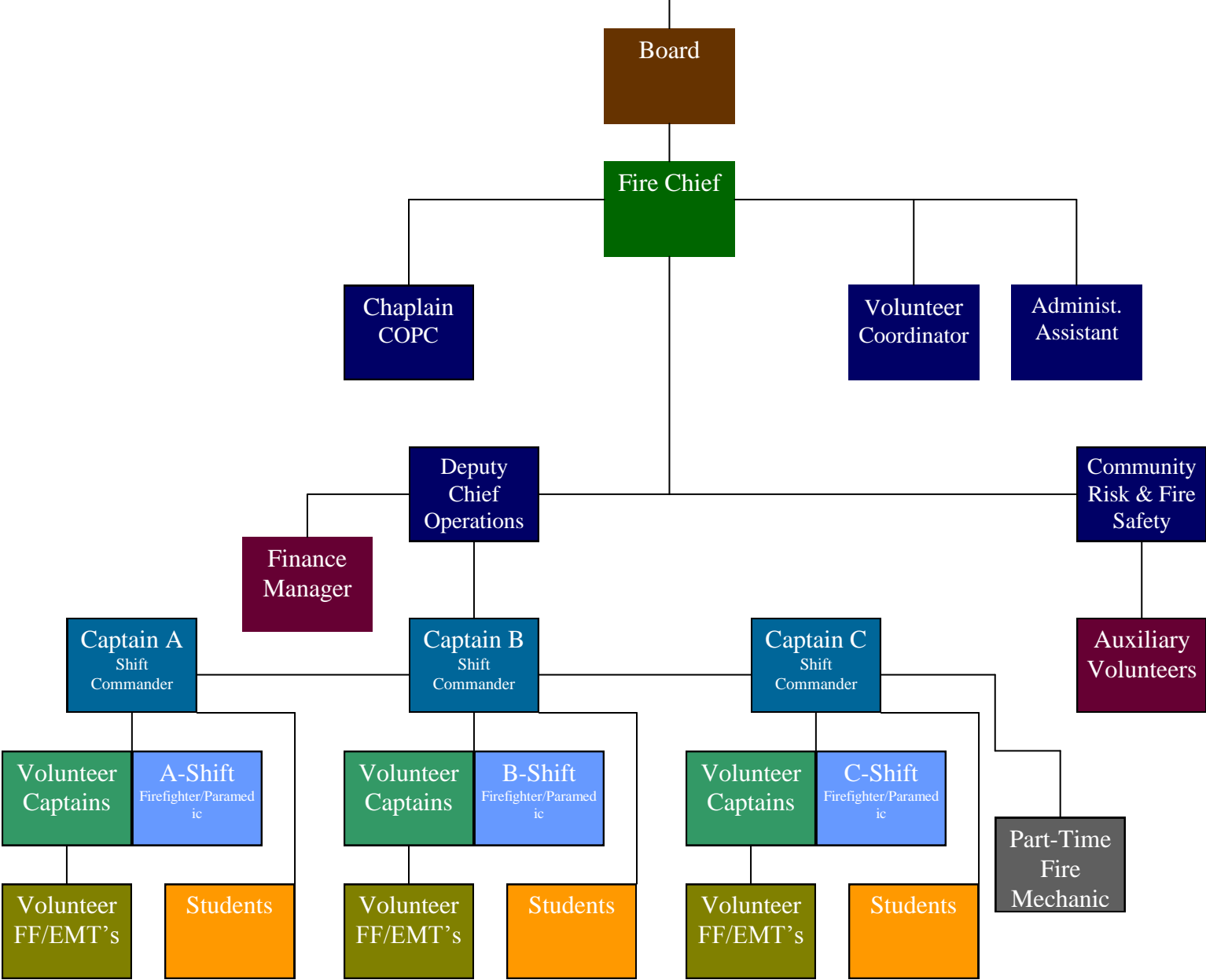
2.02 INTRODUCTION:

The following organizational chart lists the positions within the District and identifies clear lines of authority and responsibility for the District.

2.03 ORGANIZATIONAL CHART:

See page 2.

Residents of the Sisters-Camp Sherman Rural Fire Protection District



**Sisters-Camp Sherman Rural Fire Protection District
Organizational Chart**