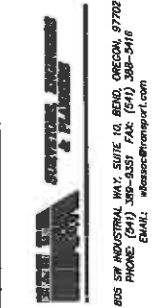
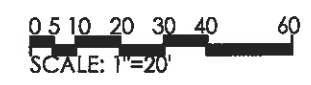


COPYRIGHT 1998  
 LOMBARD-CONRAD ARCHITECTS  
 All rights reserved. Reproduction or  
 use in any form or by any means --  
 graphic, electronic, mechanical, etc.  
 without written permission of  
 LOMBARD-CONRAD ARCHITECTS is strictly  
 out subject to official provisions.



NORTH



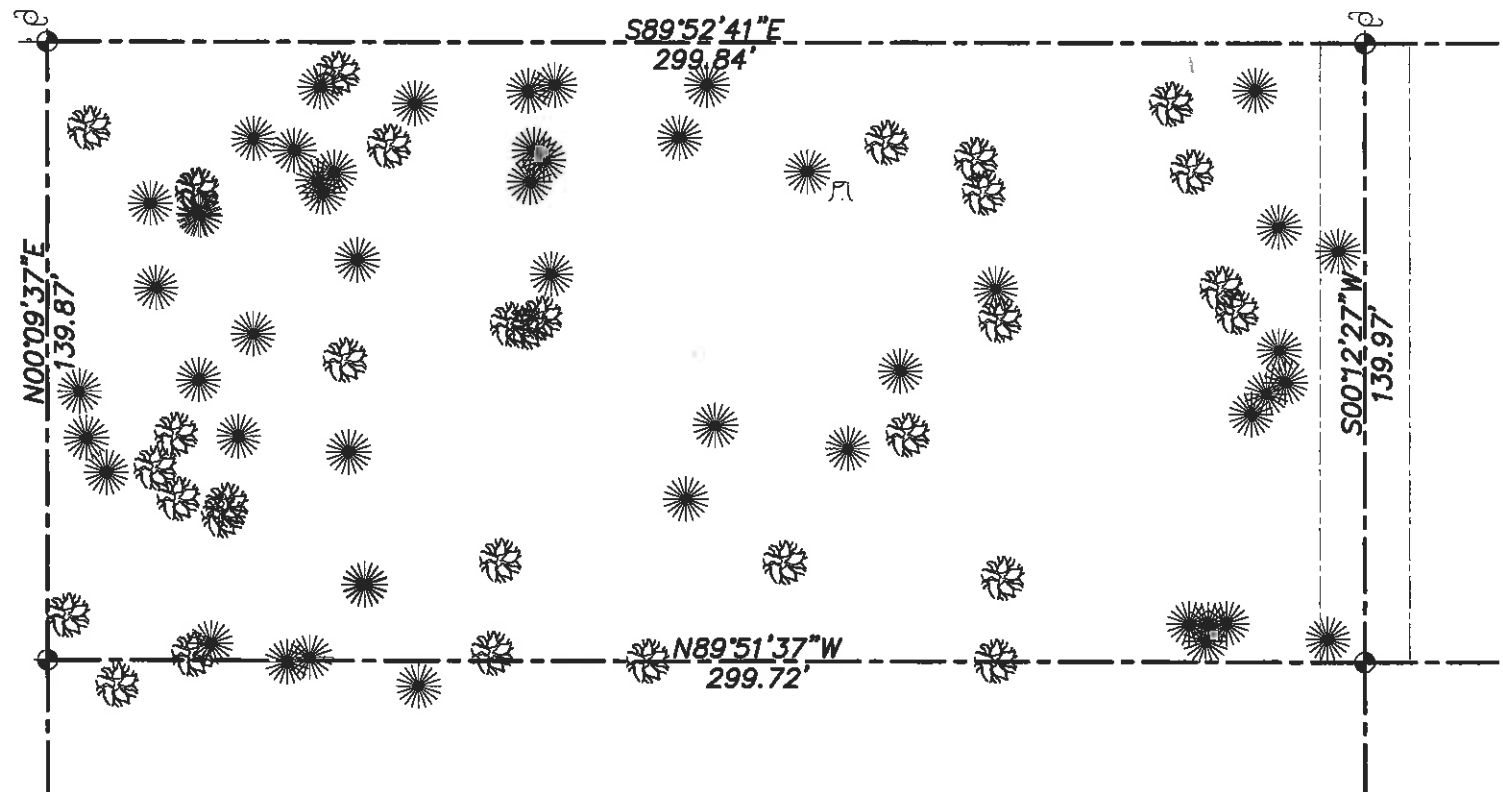
STEEL ASSOCIATES  
 ARCHITECTS LLC  
 686 NW YORK DRIVE, SUITE 150  
 BEND, OR 97703  
 541.382.9867 FAX 541.385.8816  
 info@steele-arch.com

**SURVEY NOTES**

1. THIS TOPOGRAPHIC SURVEY WAS PERFORMED BY HICKMAN, WILLIAMS & ASSOCIATES ON DEC. 14, 1997.
2. ALL BEARINGS AND DISTANCES SHOWN HAVE BEEN FIELD MEASURED AND VERIFIED.
3. ALL COORDINATES AND ELEVATIONS HAVE BEEN ESTABLISHED BY AN ASSUMED POINT AS SHOWN.
4. THE APPROXIMATE LOCATIONS OF THE TELEPHONE & POWER SERVICES AS SHOWN HAVE BEEN ESTIMATED BY SQUAW CREEK RECREATIONAL ESTATES MANAGEMENT.
5. THE TREE LOCATIONS AS SHOWN REPRESENT ALL TREES WITH DIAMETERS EQUAL TO OR GREATER THAN 8".

SORREL DRIVE

BUFFALO DRIVE



**GENERAL NOTES**

<b>OWNER/DEVELOPER:</b>	SISTERS -CAMP SHERMAN RURAL FIRE PROTECTION DISTRICT P.O. BOX 1509 SISTERS OR 97759 541-548-0771 ATTN: DON MOUSER	<b>TAX LOT NUMBER:</b>	141119C002800
<b>ARCHITECT:</b>	LOMBARD-CONRAD ARCHITECTS 19800 VILLAGE OFFICE CT. #103 BEND OR 97702 541-382-9867 ATTN: SCOTT STEELE	<b>PRESENT USE:</b>	VACANT AND UNDEVELOPED
<b>ENGINEER/SURVEYOR:</b>	HICKMAN, WILLIAMS & ASSOCIATES 805 SW INDUSTRIAL WAY, SUITE 10 BEND OR 97702 541-388-9351 ATTN: MATT STEELE	<b>PROPOSED USE:</b>	FIRE HALL
<b>CURRENT ZONE:</b>	RURAL RESIDENTIAL-10 ACRES MINIMUM WILDLIFE AREA COMBINING UNDERLYING ZONE	<b>LOT AREA:</b>	41,945 S.F. (0.96 ACRES)
<b>ADJOINING ZONES:</b>	SAME	<b>BUILDING DIMENSIONS:</b>	SEE ARCH PLANS
		<b>BUILDING AREA:</b>	X,XXX S.F.
		<b>PARKING AREA:</b>	XX SPACES, (XX,XXX S.F. PAVEMENT)
		<b>LANDSCAPE AREA:</b>	XX,XXX S.F.
		<b>ACCESS:</b>	SORREL DRIVE
		<b>DOMESTIC WATER:</b>	SQUAW CREEK WATER DISTRICT
		<b>DOMESTIC SEWER:</b>	SEPTIC (ON-SITE)
		<b>SOLID WASTE:</b>	SCOTT STEELE'S BACK YARD
		<b>POWER:</b>	PACIFIC POWER
		<b>FIRE PROTECTION:</b>	SISTERS-CAMP SHERMAN R.F.P.D.
		<b>TELEPHONE:</b>	U.S. WEST

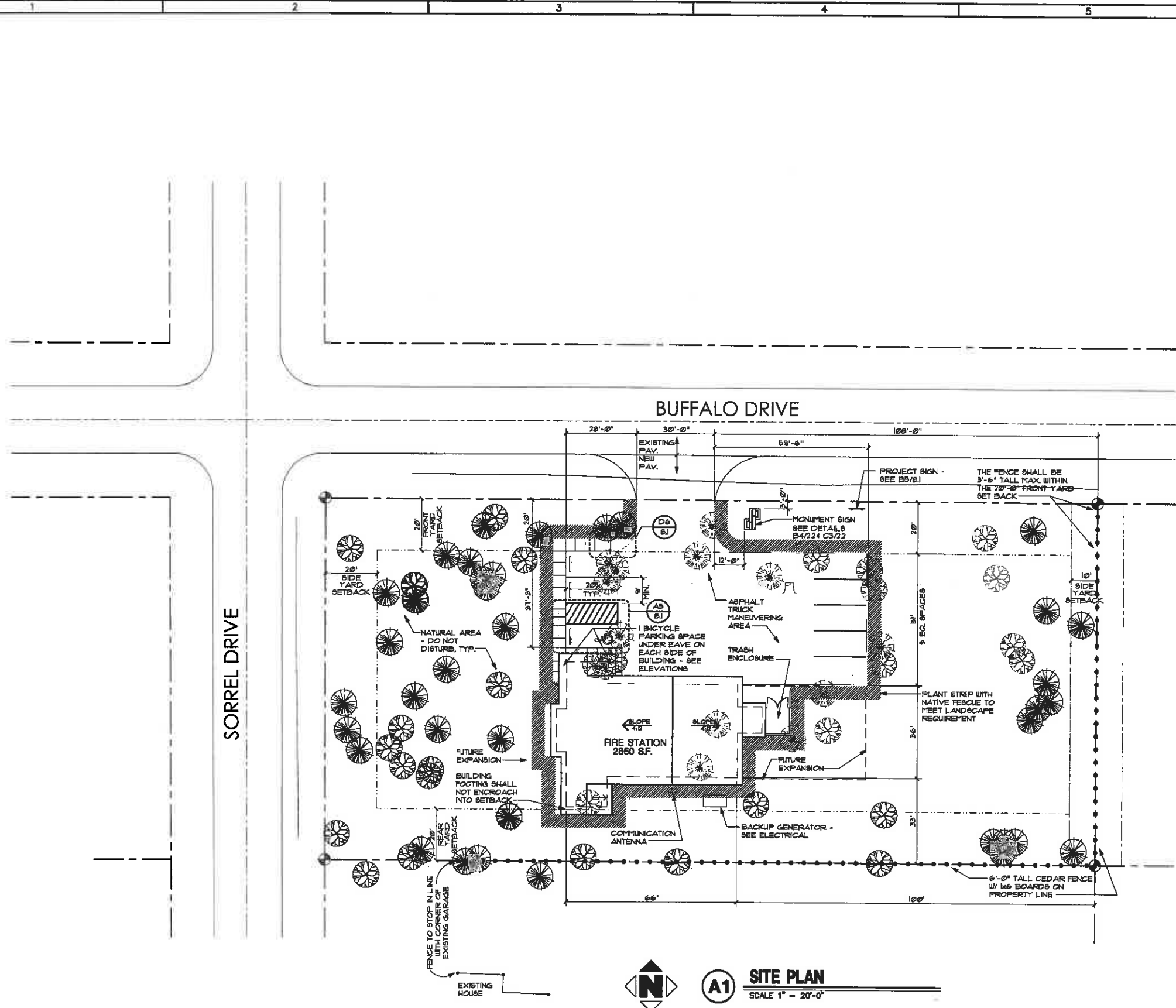
**LEGEND**



**SQAW CREEK CANYON FIRE STATION**  
**SISTERS RURAL FIRE DISTRICT**  
 70136 BUFFALO DRIVE  
 SISTERS OREGON  
 DESIGN SURVEY / SITE PLAN

JOB NO.	971111
DATE	12/10/97
DRAWN BY	C&D
CHECKED BY	TKS
REVISIONS	DATE

SHEET NO.  
**C1**  
 OF 1 SHEETS



**A1 SITE PLAN**  
 SCALE 1" = 20'-0"

**SITE DATA**

SITE AREA:	0.96 ACRES	41,945 sq ft	(100%)
BUILDING AREA:	2,860 sq ft		(6.8%)
LANDSCAPE AREA REQUIRED:	6,292 sq ft		(15%)
LANDSCAPE AREA PROVIDED:	32,295 sq ft		(77%)
ASPHALT AREA:	6,098 sq ft		(14.5%)
CONCRETE PAVING AREA:	632 sq ft		(1.6%)
STANDARD PARKING:	7 SPACES		
ACCESSIBLE PARKING:	1 VAN SPACE		
TOTAL PARKING:	8 SPACES		
BICYCLE PARKING REQUIRED:	2 SPACES		
BICYCLE PARKING PROVIDED:	2 SPACES		

**GENERAL NOTES**

- SITE LANDSCAPE TO REMAIN IN ITS NATURAL STATE. ANY DISTURBED AREAS SHALL BE REPLANTED WITH NATIVE FESCUE TO BLEND WITH EXISTING LANDSCAPE. IRRIGATION WILL BE BY HAND WATERING UNTIL FESCUE IS ESTABLISHED.
- SEE CIVIL ENGINEERING DRAWINGS FOR GRADING AND SITE UTILITIES.
- DO NOT DISTURB NATURAL AREAS ON THE SITE. CLEAR AND GRUB MINIMUM AREA REQUIRED FOR CONSTRUCTION ACTIVITY.

**LEGEND**

- EXISTING JUNIPER TO REMAIN
- EXISTING PONDEROSA TO REMAIN
- EXISTING JUNIPER TO BE REMOVED
- EXISTING PONDEROSA TO BE REMOVED
- NEW FENCE ON PROPERTY LINE - SEE PLAN FOR HEIGHTS

COPYRIGHT 1998  
 LOWARD-CORRAD ARCHITECTS  
 All rights reserved. Reproduction or use in any form or by any means - graphic, electronic, mechanical, etc. - without written permission of LOWARD-CORRAD ARCHITECTS is prohibited and subject to criminal prosecution.

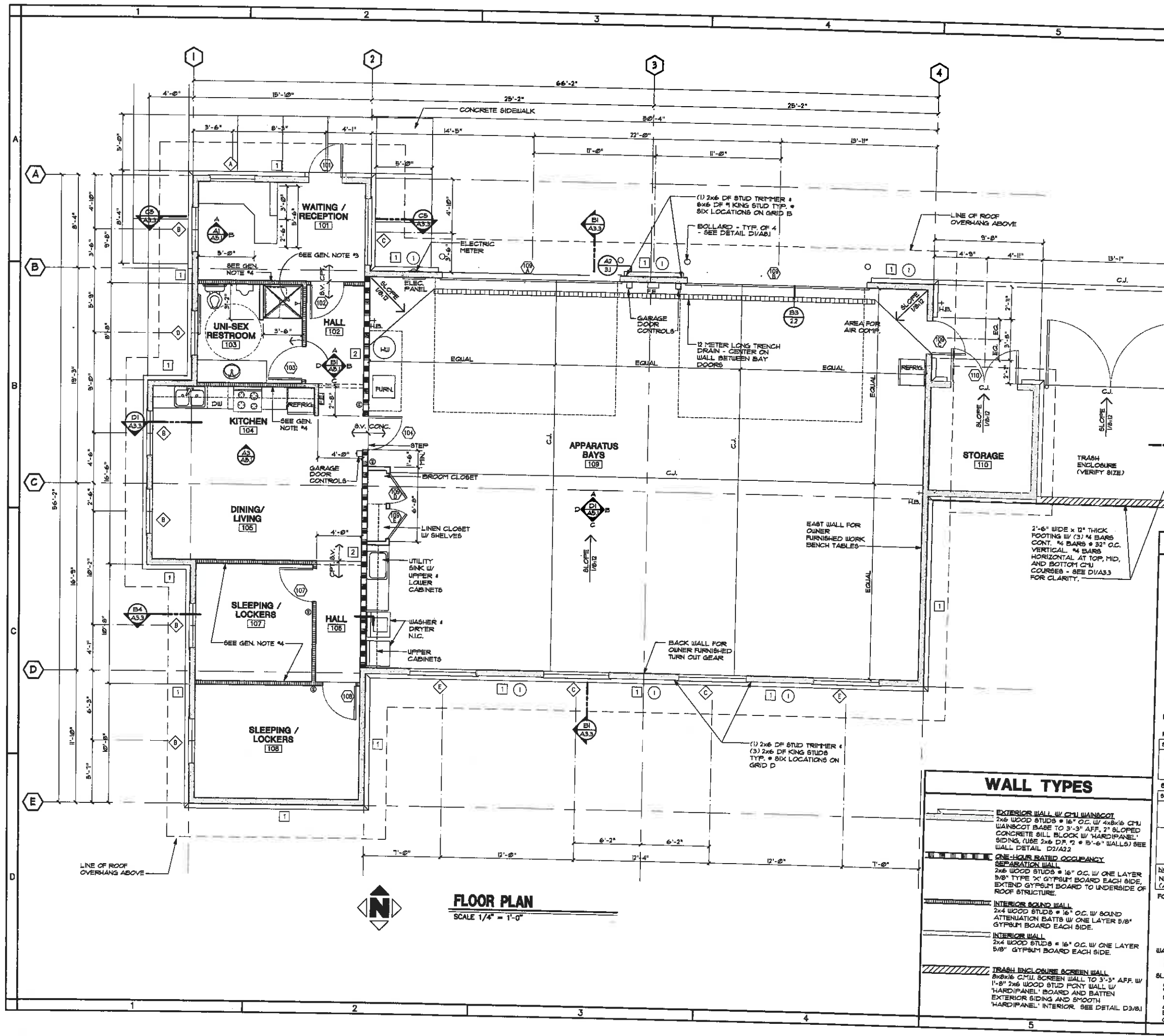
**REGISTERED ARCHITECT**  
 3315  
 SCOTT T. STEELE  
 BEND, OREGON  
 STATE OF OREGON

**STEELE ASSOCIATES**  
 ARCHITECTS LLC  
 686 NW YORK DRIVE, SUITE 150  
 541.382.9867 FAX 541.385.8816  
 BEND, OR 97703  
 info@steele-arch.com

**SQUAW CREEK CANYON**  
**FIRE STATION**  
 17288 BUFFALO DRIVE BISTERS, OREGON  
 SITE PLAN

JOB NO.	88301/01
DATE	JULY 15, 1998
DRAWN BY	JJS
CHECKED BY	SJS
REVISIONS	DATE

SHEET NO.  
**A1.1**  
 OF SHEETS



### GENERAL NOTES

1. THE WALLS OF THE APPARATUS BAYS SIT ON A CONCRETE CURB. THE CURB SHALL BE 4" ALONG GRID LINE 'D' AND SHALL REMAIN LEVEL AROUND THE PERIMETER OF THE ROOM. AS THE SLAB SLOPES FROM GRID 'D' DOWN TOWARD THE TRENCH DRAIN AT GRID 'B', THE DISTANCE BETWEEN THE TOP OF SLAB AND TOP OF CURB GRADUALLY INCREASES.
2. WALLS OF ROOM 110 SIT ON A 4" CURB.
3. RECESS SLAB AS NECESSARY TO RECEIVE ADA SHOWER UNIT. VERIFY REQUIREMENTS W/ SHOWER MANUFACTURER.
4. CONSTRUCTION JOINT IN CONCRETE SLAB RUNNING UNDERNEATH THIS WALL.
5. O.F.C.I. KITCHEN EXHAUST FAN (ABOVE RANGE) TO BE VENTED THROUGH ROOF.

### STRUCTURAL NOTES

**HEADERS**  
ALL REQUIRED HEADERS OVER DOORS AND WINDOWS TO BE 6x8 DF #1  
HEADERS OVER GARAGE DOORS TO BE 5 1/8"x10 1/2" GLU-LAM'S (24F-V4)

**ROOF TRUSSES**  
TYPE 'A' MFR TRUSSES • 24" O.C. SPANNING BETWEEN GRIDS 2 & 4 - PLACED BETWEEN GRIDS B & D  
TYPE 'B' MFR TRUSSES • 24" O.C. SPANNING BETWEEN GRIDS 1 & 2 - PLACED BETWEEN GRIDS A & B AS WELL AS BETWEEN GRIDS D & E  
TYPE 'C' MFR TRUSSES • 24" O.C. SPANNING BETWEEN GRIDS 1 & 2 - PLACED FROM GRID B TO KITCHEN WALL AND FROM GRID D TO LIVING/DINING WALL  
TYPE 'D' MFR TRUSSES • 24" O.C. SPANNING BETWEEN GRID 2 THE EXTERIOR WALL WEST OF GRID 1 - PLACED BETWEEN THE TYPE 'C' MFR TRUSSES

**NOTE** SEE SHEET A33 FOR SECTIONS SHOWING TRUSS TYPES

**ROOF JOISTS**  
2x10 DF #2 • 24" O.C. OVER ROOM #10 (STORAGE)

**HOLD-DOWN SCHEDULE**

SYMBOL	TYPE	ATTACHMENT
1	8" MP. FHD2 W/ (10) SCS 1/4"x3" WOOD SCREWS TO (2) 2x STUDS MIN.	8" MP. 68TB16 W/ 12" MIN. EMBED.

**BEAR WALL SCHEDULE**

SYMBOL	BEAR WALL INFO	SILL FASTENER
1	(1) LAYER OF 1/2" CDX PLYWOOD APA INDEX 23716 W/ 8d COMMON • 6" O.C. • PANEL EDGES.	5/8" AB. • 48" O.C.
2	(2) LAYERS OF 5/8" GYPSUM BOARD W/ 8d COLLER NAILS • 1" O.C. • ALL STUDS, PLATES & BLKS.	5/8" AB. • 48" O.C.

**NOTE PERTAINING TO BEAR WALLS:**  
NAIL INTERMEDIATE FRAMING MEMBERS W/ 8d • 12" O.C. (AT PLYWOOD SHEAR WALLS). BLOCK ALL EDGES

**FOOTINGS**  
TYPICAL FOOTINGS ARE TO BE 16" WIDE x 10" THICK W/ (2) #4 CONT. 6" STEM WALL 4 #4 BARS VERTICAL • 48" O.C. (ALT. DIRECTIONS) UNLESS NOTED OTHERWISE ON PLANS.  
**NOTE.** FOOTINGS ARE TO BE UNDER ALL EXTERIOR WALLS. FOOTINGS ARE ALSO TO BE UNDER THE FULL LENGTH OF WALLS ALONG GRIDS 2 & 4.

**WALL FRAMING NOTES**  
(1) 2x6 DF STUD TRIMMER 4 (2) 2x6 DF KING STUDS TYP. AT HEADERS UNLESS NOTED OTHERWISE ON PLANS.

**SLAB**  
AREAS OTHER THAN APPARATUS BAY: 4" CONC. SLAB W/ #5 BARS • 24" EA. WAY • 1 1/2" CLR FROM TOP OF SLAB. SLAB OVER 6" CRUSHED ROCK.  
APPARATUS BAY: 8" CONC. SLAB W/ 3 LAYERS #5 BARS • 12" EA. WAY. 1/2" CLEAR FROM TOP AND BOTTOM OF SLAB. SLAB OVER 6" CRUSHED ROCK.

### WALL TYPES

**EXTERIOR WALL W/ CMU WANSBOT**  
2x6 WOOD STUDS • 16" O.C. W/ 4x8x16 CMU WANSBOT BASE TO 3'-3" AFF. 2" SLOPED CONCRETE SILL BLOCK W/ 'HARDIPANEL' SIDING. USE 2x6 DF #2 • 15'-6" WALLS) SEE WALL DETAIL D3/A22

**ONE-HOUR RATED OCCUPANCY SEPARATION WALL**  
2x6 WOOD STUDS • 16" O.C. W/ ONE LAYER 5/8" TYPE 'X' GYPSUM BOARD EACH SIDE. EXTEND GYPSUM BOARD TO UNDERSIDE OF ROOF STRUCTURE.

**INTERIOR SOUND WALL**  
2x4 WOOD STUDS • 16" O.C. W/ SOUND ATTENUATION BATTS W/ ONE LAYER 5/8" GYPSUM BOARD EACH SIDE.

**INTERIOR WALL**  
2x4 WOOD STUDS • 16" O.C. W/ ONE LAYER 5/8" GYPSUM BOARD EACH SIDE.

**TRASH ENCLOSURE SCREEN WALL**  
5/8"x16" CMU SCREEN WALL TO 3'-3" AFF. W/ 1"-8" 2x6 WOOD STUD POINT WALL W/ 'HARDIPANEL' BOARD AND BATTEN EXTERIOR SIDING AND SMOOTH 'HARDIPANEL' INTERIOR. SEE DETAIL D3/B1

**FLOOR PLAN**  
SCALE 1/4" = 1'-0"

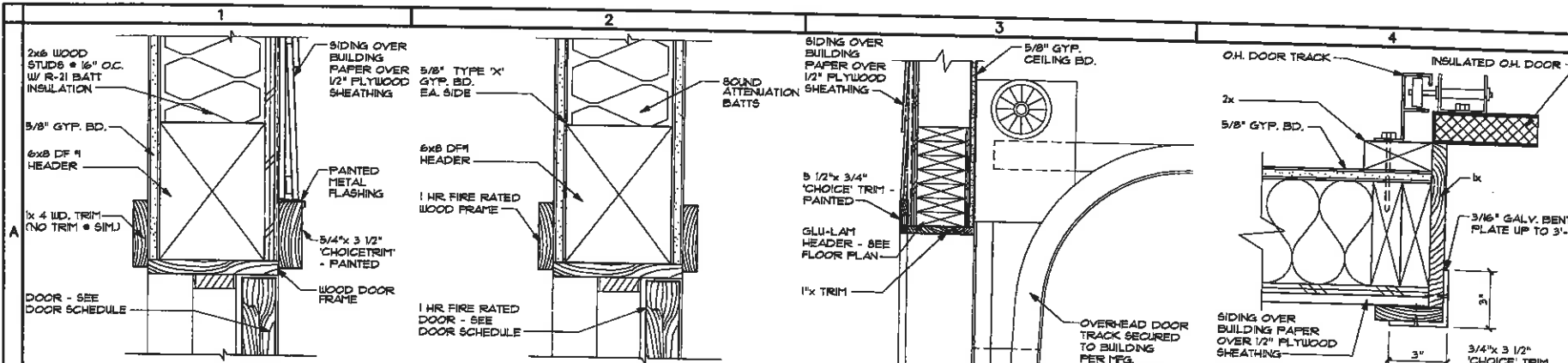
COPYRIGHT 1998  
LOMBARD-CONRAD ARCHITECTS  
All rights reserved. Reproduction or use in any form or by any means - graphic, electronic, mechanical, etc. - without written permission of LOMBARD-CONRAD ARCHITECTS is prohibited and subject to criminal prosecution.

REGISTERED ARCHITECT  
3315  
SCOTT T. STEELE  
BEND, OREGON  
STATE OF OREGON

**STEELE ASSOCIATES**  
ARCHITECTS LLC  
686 NW YORK DRIVE, SUITE 150  
BEND, OR 97703  
541.382.9867  
FAX 541.385.8816  
info@steele-arch.com

**SQUAW CREEK CANYON**  
**FIRE STATION**  
17233 BUFFALO DRIVE SISTERS, OREGON  
**FLOOR PLAN**

JOB NO. 20020121  
DATE JULY 15, 1998  
DRAWN BY JUS  
CHECKED BY JTB  
REVISIONS  
SHEET NO. **A2.1**

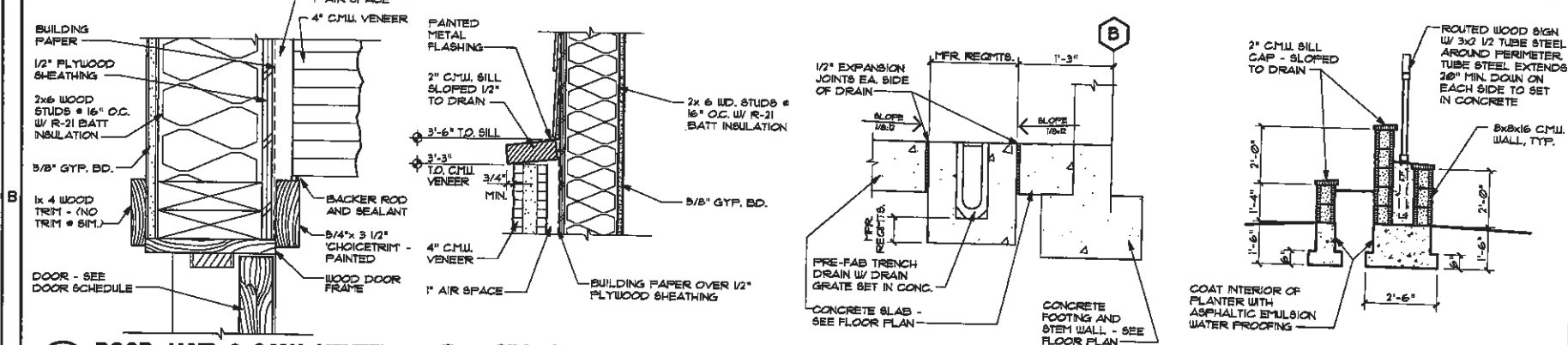


**A1 DOOR HEAD** JAMB SIM. SCALE 3" = 1'-0" 423

**A2 1 HR DOOR HEAD** JAMB SIM. SCALE 3" = 1'-0" 422

**A3 DOOR HEAD** SCALE 1 1/2" = 1'-0" 409

**A4 DOOR JAMB** SCALE 3" = 1'-0" 410

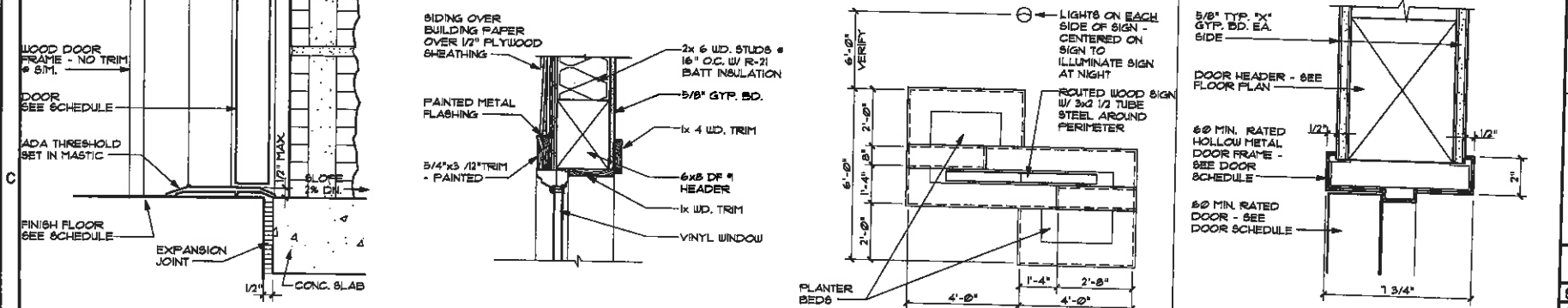


**B1 DOOR JAMB @ CMU VENEER** SCALE 3" = 1'-0" 424

**B2 SILL CAP @ WALL** SCALE 1 1/2" = 1'-0" 438

**B3 TRENCH DRAIN DETAIL** SCALE 1" = 1'-0" 446

**B4 SIGN - SECTION** SCALE 3/8" = 1'-0" 431

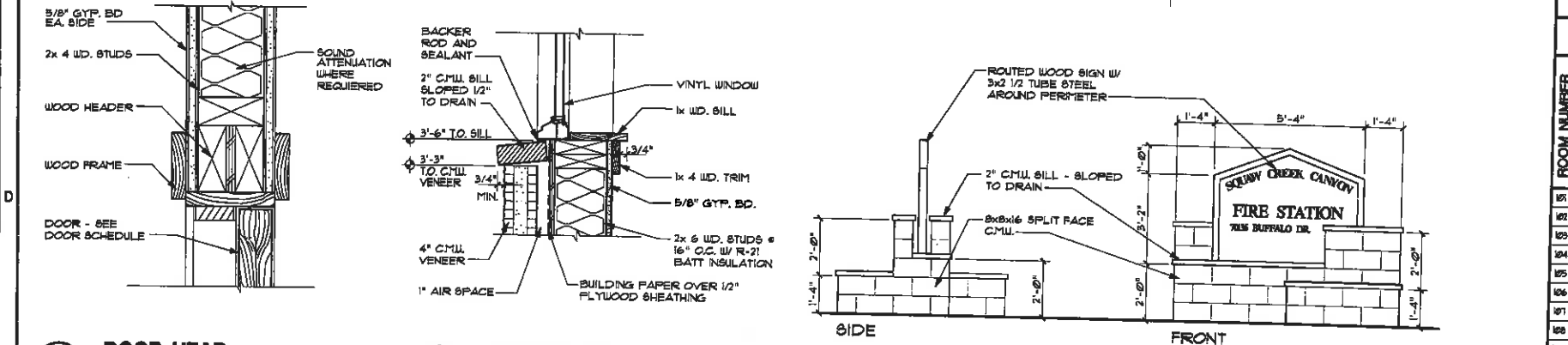


**C1 DOOR SILL** SCALE 3" = 1'-0" 425

**C2 WINDOW HEAD** SCALE 1 1/2" = 1'-0" 427

**C3 SIGN - PLAN** SCALE 3/8" = 1'-0" 430

**C4 DOOR HEAD** JAMB SIM. SCALE 3" = 1'-0" 430



**D1 DOOR HEAD** JAMB SIM. SCALE 3" = 1'-0" 421

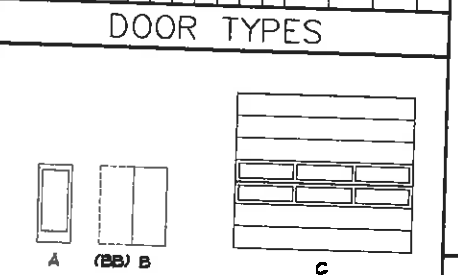
**D2 WINDOW SILL** SCALE 1 1/2" = 1'-0" 426

**D3 SIGN** SCALE 3/8" = 1'-0" 428

### DOOR SCHEDULE

SEE DOOR LEGEND

DOOR MARK	1 DOOR SIZE	2 DOOR TYPE	3 CONSTRUCTION	4 FRAME/FINISH	5 GLASS	6 GLAZING	7 FRAME TYPE	8 FRAME CONST.	NUMBER INDICATES DETAIL ON SHEET			9 REMARKS
									HEAD	JAMB	SILL	
101	3'-0" x 7'-0"	A	SR	T	-	-	AI	BI	CI	-	-	-
102	3'-0" x 7'-0"	B	-	-	-	-	DI	DI SM	-	-	-	-
103	3'-0" x 7'-0"	B	-	-	-	-	DI	DI SM	-	-	-	-
104	3'-0" x 7'-0"	B	-	-	60	-	H1	C4	C4 SM	A5/51	5-1	-
107	3'-0" x 7'-0"	B	-	-	-	-	DI	DI SM	-	-	-	-
108	3'-0" x 7'-0"	B	-	-	-	-	DI	DI SM	-	-	-	-
109A	16'-0" x 4'-0"	C	MG	CI	-	-	A3	A4	-	-	-	-
109B	16'-0" x 4'-0"	C	MG	CI	-	-	A3	A4	-	-	-	-
109C	3'-0" x 7'-0"	B	-	-	-	-	AI	BI	CI	-	-	-
109D	2'-0" x 7'-0"	B	-	-	-	-	DI	DI SM	-	-	-	-
109E	2'-0" x 7'-0"	B	-	-	-	-	DI	DI SM	-	-	-	-
110	6'-0" x 7'-0"	BB	-	-	-	-	AI SM	BI SM	CI SM	-	-	-



### WINDOW & FRAME LEGEND

XX FRAME MATERIAL  
XX GLASS TYPE

GLASS TYPE  
TYPE 1 - INSULATED (3/16") DOUBLE, LOW-EMISSIVITY GLAZING  
TYPE 2 - INSULATED (5/32") DOUBLE LOW-E GLAZING EXTERIOR PANE TO BE OBTAINED

### ROOM MATERIAL LEGEND

SYMBOL	DESCRIPTION
CP	CARPET
P	PAINT - SEE SPECIFICATION
RB	RUBBER BASE 4" COVE BASE
SC	SEALED CONCRETE
SV	SHEET VINYL

### ROOM FINISH SCHEDULE

ROOM NUMBER	ROOM NAME	FLOOR/BASE	WALLS/WAINSCOT	CEILING	CEILING HT.	SEE ROOM FINISH REMARKS	SPECIAL EQUIPMENT
101	BATH / RECP.	CP / RB	P1 P1 P1 P1	P1	9'-0"	-	-
102	HALL	SV / RB	P1 P1 P1 P1	P1	9'-0"	-	-
103	RESTROOM	SV / RB	P2 P2 P2 P2	P2	9'-0"	-	-
104	KITCHEN	SV / RB	P2 P2 P2 P2	P2	9'-0"	-	-
105	DINING / LIVING	SV / RB	P2 P2 P2 P2	P2	9'-0"	-	-
106	HALL	CP / RB	P1 P1 P1 P1	P1	9'-0"	-	-
107	SLEEPING	CP / RB	P1 P1 P1 P1	P1	9'-0"	-	-
108	SLEEPING	CP / RB	P1 P1 P1 P1	P1	9'-0"	-	-
109	APPARATUS	SC	P2 P2 P2 P2	P2	9'-6"	-	-
110	STORAGE	SC	P2 P2 P2 P2	P2	9'-0"	-	-

### GENERAL FINISH NOTES

- PROVIDE SEALANT AT ALL GYP. BOARD TO DISSIMILAR MATERIALS.
- ALL GYPSUM BOARD ON RESTROOM AND APPARATUS BAY WALLS SHALL BE WATER RESISTANT.
- INTERIOR DOOR & WINDOW FRAMES TO BE PAINTED AN ACCENT COLOR TO BE CHOSEN BY ARCHITECT & OWNER.

\* TYP. CEILING HEIGHT = 9'-0" UNL.

L VARIES - SEE DIV 3

### ROOM FINISH REMARKS

### DOOR LEGEND

TYPICAL SHOWN AS A \* \* \*

- TYPICAL OPENING SIZE = 3'-0" X 7'-0"
- SEE DOOR TYPES.
- DOOR CONSTRUCTION:  
TYPICAL = SOLID CORE  
MG = METAL GARAGE DOOR  
BR = WOOD STYLE AND RAIL
- FACING AND FINISH:  
WOOD PAINTED  
MF = METAL PAINTED
- GLASS:  
TYPICAL = CLEAR TEMPERED INSULATED GLAZING  
CI = CLEAR INSULATED GLAZING  
T = TEMPERED
- 20, 30, 60 INDICATES MINUTES OF FIRE RATING
- FRAME CONSTRUCTION:  
TYPICAL = WOOD  
HM = HOLLOW METAL

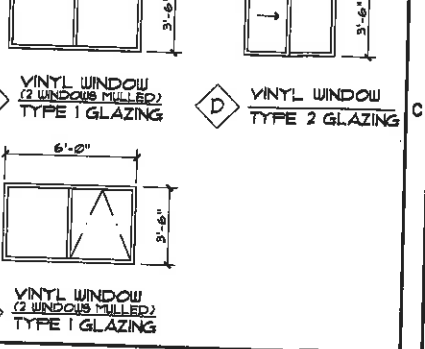
REMARKS  
1. HOLLOW METAL FRAME TO BE 60 MINUTE FIRE RATED FRAME WITH REQUIRED RATED GASKETS, ETC.



### WINDOW & FRAME LEGEND

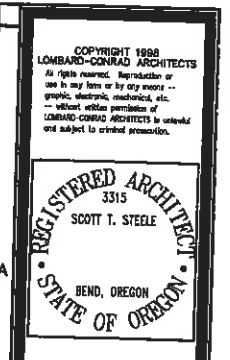
XX FRAME MATERIAL  
XX GLASS TYPE

GLASS TYPE  
TYPE 1 - INSULATED (3/16") DOUBLE, LOW-EMISSIVITY GLAZING  
TYPE 2 - INSULATED (5/32") DOUBLE LOW-E GLAZING EXTERIOR PANE TO BE OBTAINED



### ROOM FINISH SCHEDULE

ROOM NUMBER	ROOM NAME	FLOOR/BASE	WALLS/WAINSCOT	CEILING	CEILING HT.	SEE ROOM FINISH REMARKS	SPECIAL EQUIPMENT
101	BATH / RECP.	CP / RB	P1 P1 P1 P1	P1	9'-0"	-	-
102	HALL	SV / RB	P1 P1 P1 P1	P1	9'-0"	-	-
103	RESTROOM	SV / RB	P2 P2 P2 P2	P2	9'-0"	-	-
104	KITCHEN	SV / RB	P2 P2 P2 P2	P2	9'-0"	-	-
105	DINING / LIVING	SV / RB	P2 P2 P2 P2	P2	9'-0"	-	-
106	HALL	CP / RB	P1 P1 P1 P1	P1	9'-0"	-	-
107	SLEEPING	CP / RB	P1 P1 P1 P1	P1	9'-0"	-	-
108	SLEEPING	CP / RB	P1 P1 P1 P1	P1	9'-0"	-	-
109	APPARATUS	SC	P2 P2 P2 P2	P2	9'-6"	-	-
110	STORAGE	SC	P2 P2 P2 P2	P2	9'-0"	-	-

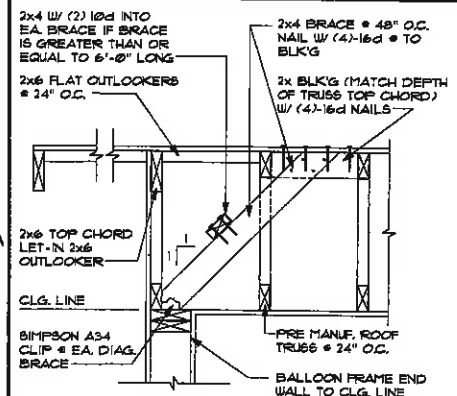


**STEELE ASSOCIATES**  
ARCHITECTS LLC  
686 NW YORK DRIVE, SUITE 150  
BEND, OR 97703  
541.382.9867  
info@steele-arch.com

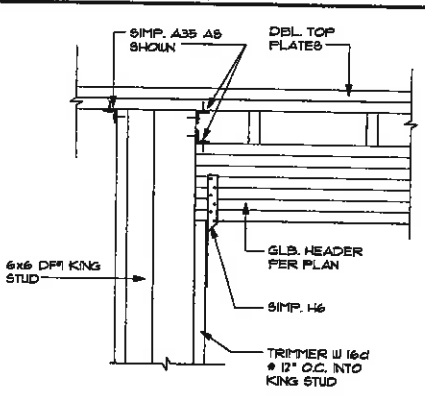
**SQUAW CREEK CANYON**  
**FIRE STATION**  
17233 BUFFALO DRIVE SISTERS, OREGON

JOB NO. 2030101  
DATE JULY 15, 1998  
DRAWN BY EBF  
CHECKED BY BTD  
REVISIONS

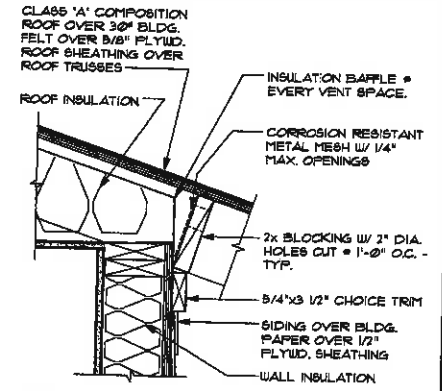
**A2.2**



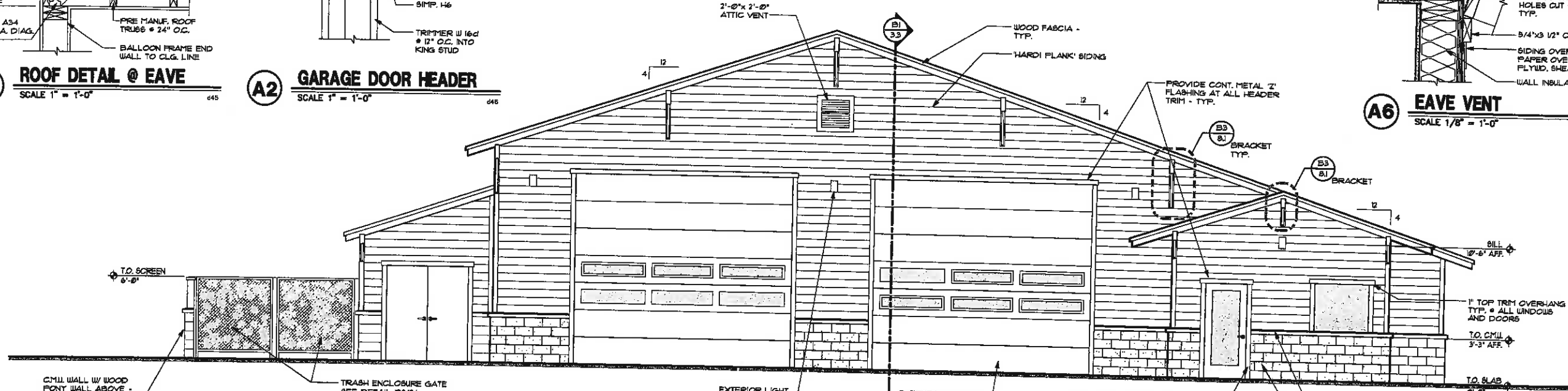
**A1 ROOF DETAIL @ EAVE**  
SCALE 1" = 1'-0"



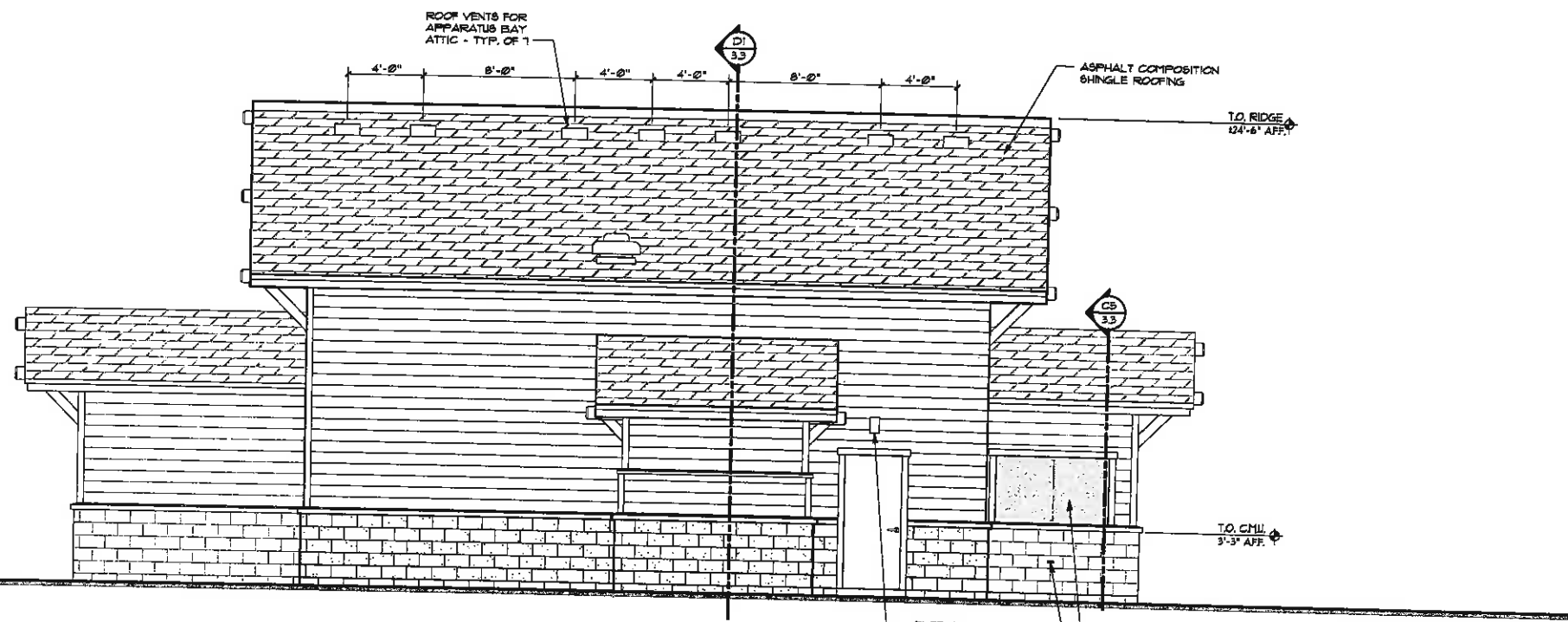
**A2 GARAGE DOOR HEADER**  
SCALE 1" = 1'-0"



**A6 EAVE VENT**  
SCALE 1/8" = 1'-0"



**A1 NORTH ELEVATION**  
SCALE 1/4" = 1'-0"



**D1 EAST ELEVATION**  
SCALE 1/4" = 1'-0"

BICYCLE LOCKING DEVICE: 1/8x5 GALV. SHOULDER NUT EYE BOLT SECURED TO CMU. VENEER W/ SIMP. 8BT EPOXY TIE SYSTEM - FULLY EMBED. BOLT TO BE CENTERED IN CMU BLOCK # 42'-0" ABOVE SIDEWALK. EYE BOLT TO HAVE 1 3/4" INSIDE DIAMETER CLEARANCE.

COPYRIGHT 1988  
LOMBARD-CONRAD ARCHITECTS  
All rights reserved. Reproduction or use in any form or by any means - graphic, electronic, mechanical, etc. without written permission of LOMBARD-CONRAD ARCHITECTS is prohibited and subject to criminal prosecution.

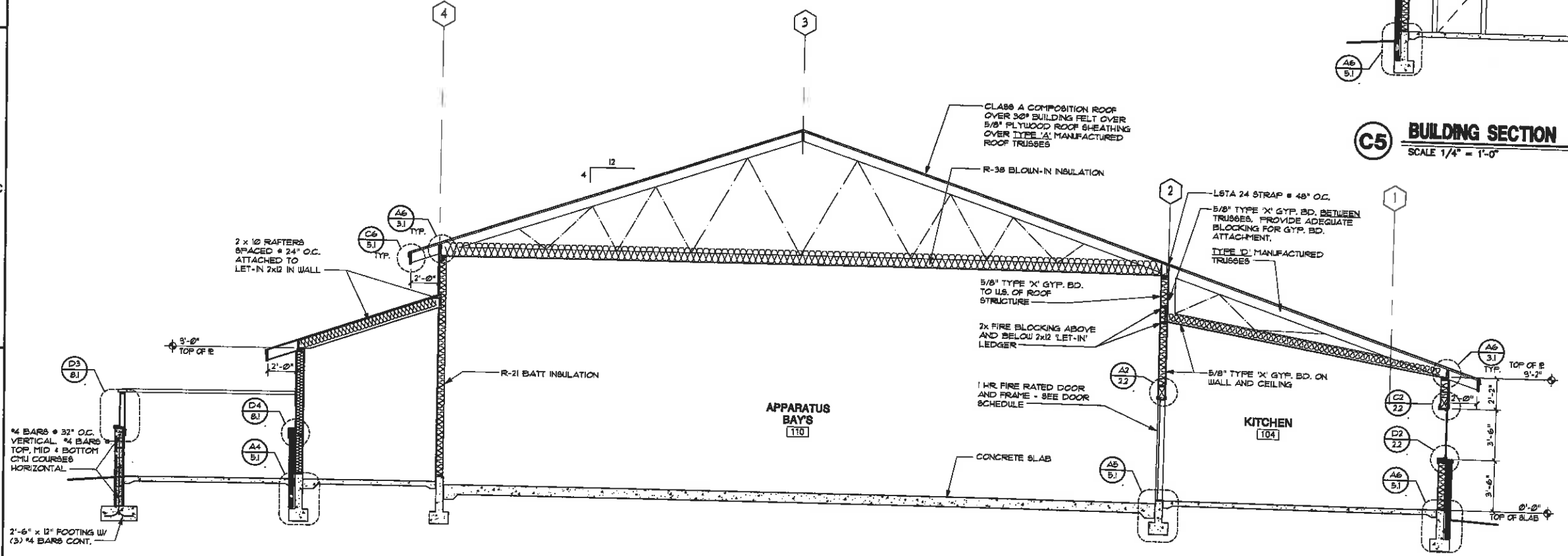
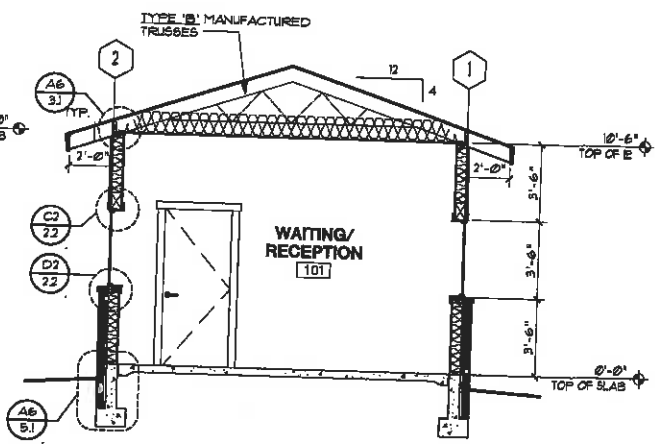
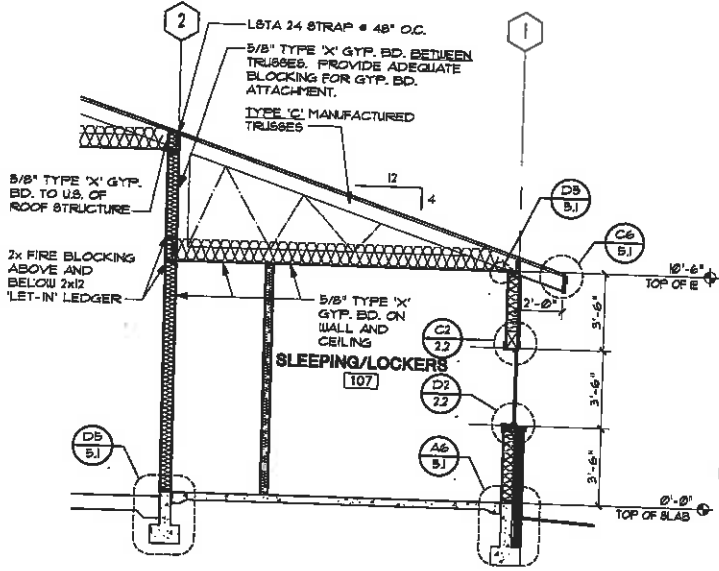
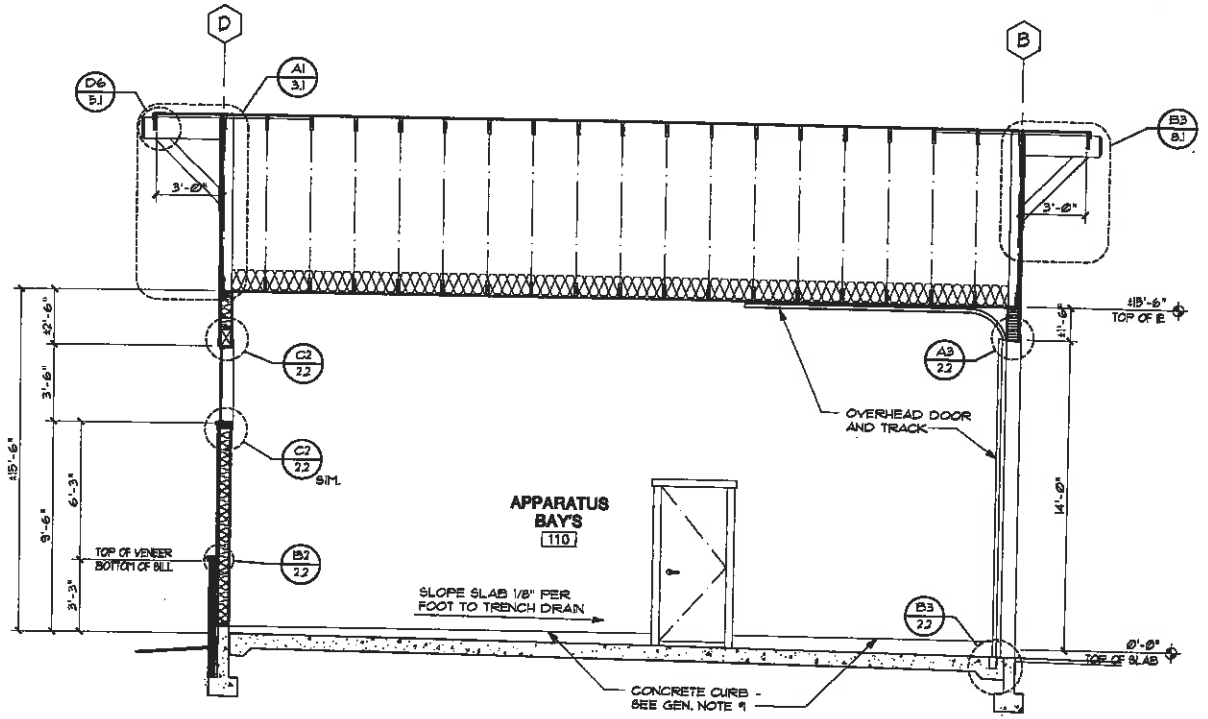
REGISTERED ARCHITECT  
3315  
SCOTT T. STEELE  
BEND, OREGON  
STATE OF OREGON

**STEELE ASSOCIATES**  
ARCHITECTS LLC  
666 NW YORK DRIVE, SUITE 150  
541.382.9867  
BEND, OR 97703  
info@steele-arch.com

**SQUAW CREEK CANYON**  
**FIRE STATION**  
17233 BUFFALO DRIVE SISTERS, OREGON  
**EXTERIOR ELEVATIONS**

JOB NO. 8832101  
DATE JULY 15, 1988  
DRAWN BY JUS CHECKED BY STB  
REVISIONS DATE

SHEET NO.  
**A3.1**



**GENERAL NOTES**

1. THE WALLS OF THE APPARATUS BAYS 8'1" ON A CONCRETE CURB. THE CURB SHALL BE 4" ALONG GRID LINE 'D' AND SHALL REMAIN LEVEL AROUND THE PERIMETER OF THE ROOM. AS THE SLAB SLOPES FROM GRID 'D' DOWN TOWARD THE TRENCH DRAIN AT GRID 'B' THE DISTANCE BETWEEN THE TOP OF SLAB AND TOP OF CURB GRADUALLY INCREASES.

COPYRIGHT 1998  
LOMBARD-CONRAD ARCHITECTS  
All rights reserved. Reproduction or use in any form or by any means - graphic, electronic, mechanical, etc. - without written permission of LOMBARD-CONRAD ARCHITECTS is unlawful and subject to criminal penalties.

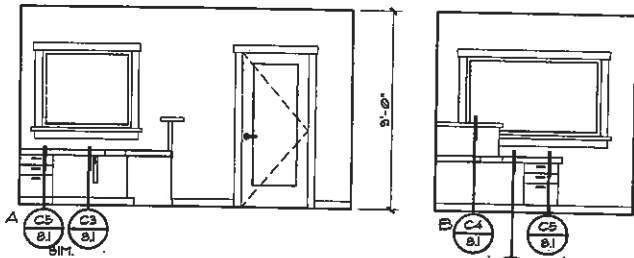
REGISTERED ARCHITECT  
3315  
SCOTT T. STEELE  
BEND, OREGON  
STATE OF OREGON

**STEELE ASSOCIATES**  
ARCHITECTS LLC  
686 NW YORK DRIVE, SUITE 150  
541.382.9867 FAX 541.385.8816  
BEND, OR 97703  
info@steele-arch.com

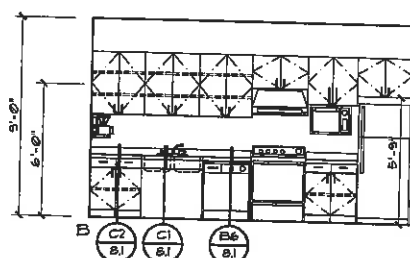
**SQUAW CREEK CANYON**  
FIRE STATION  
17288 BUFFALO DRIVE SISTERS, OREGON  
BUILDING SECTIONS

JOB NO. 9832101  
DATE JULY 15, 1998  
DRAWN BY JUG  
CHECKED BY STG  
REVISORS

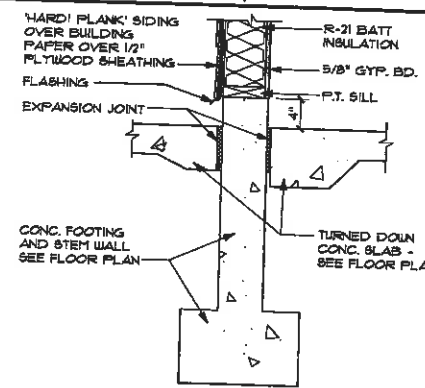
SHEET NO.  
**A3.3**  
OF SHEETS



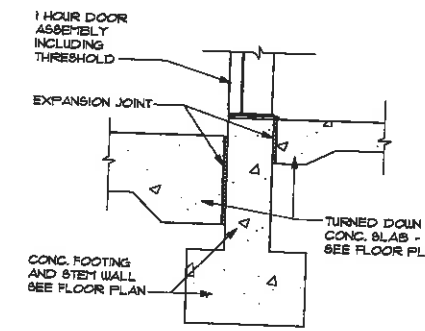
**A1 RECEPTION**  
SCALE 1/4" = 1'-0"



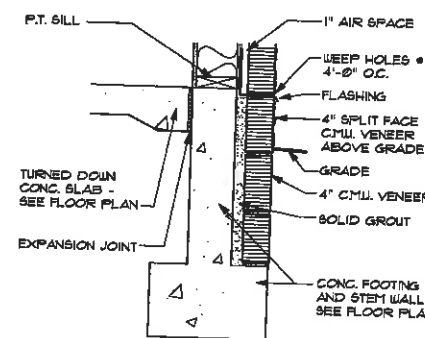
**A3 KITCHEN**  
SCALE 1/4" = 1'-0"



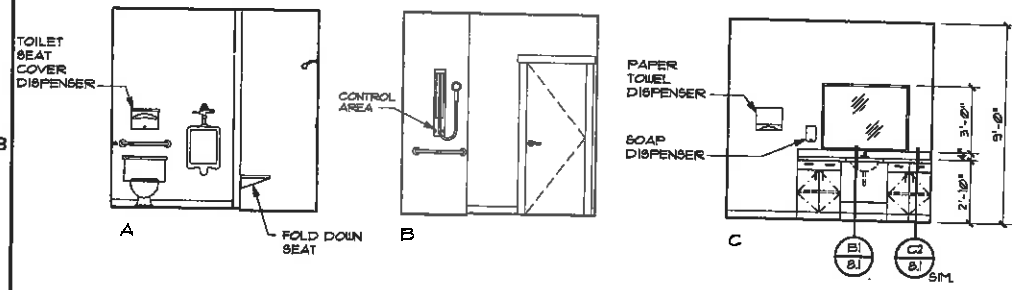
**A4 FOUNDATION DETAIL**  
SCALE 1" = 1'-0"



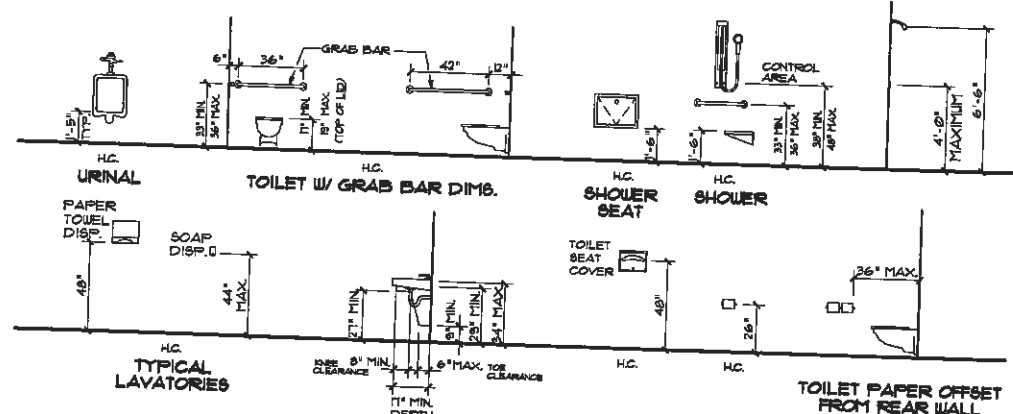
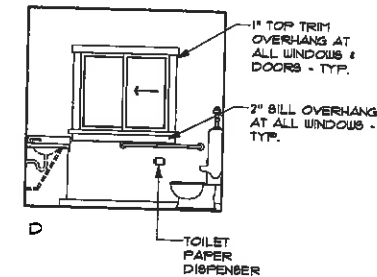
**A5 FOUNDATION DETAIL**  
SCALE 1" = 1'-0"



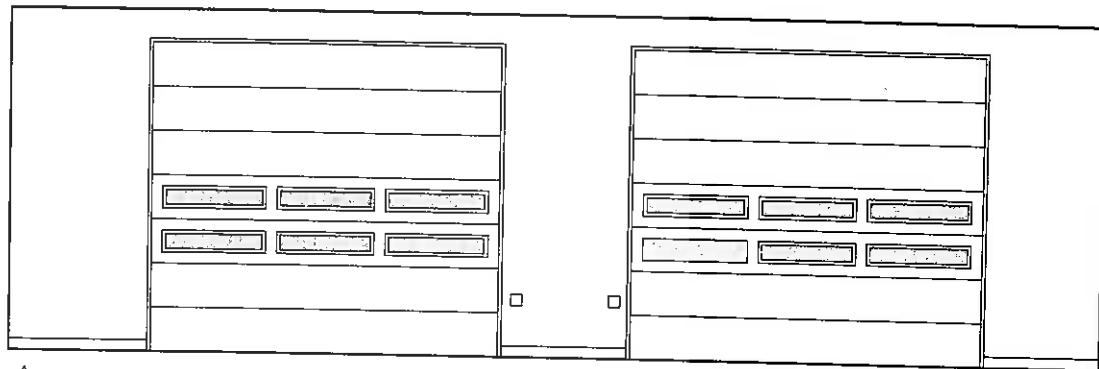
**A6 FOUNDATION DETAIL**  
SCALE 1" = 1'-0"



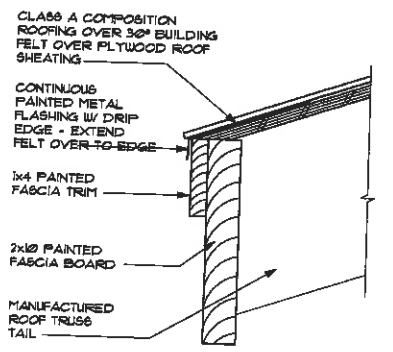
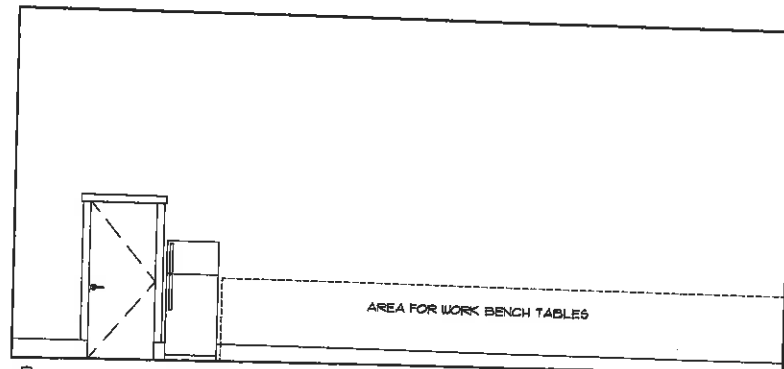
**B1 RESTROOM**  
SCALE 1/4" = 1'-0"



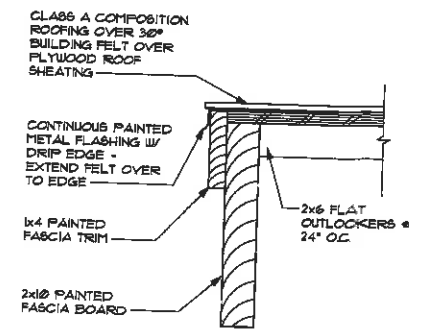
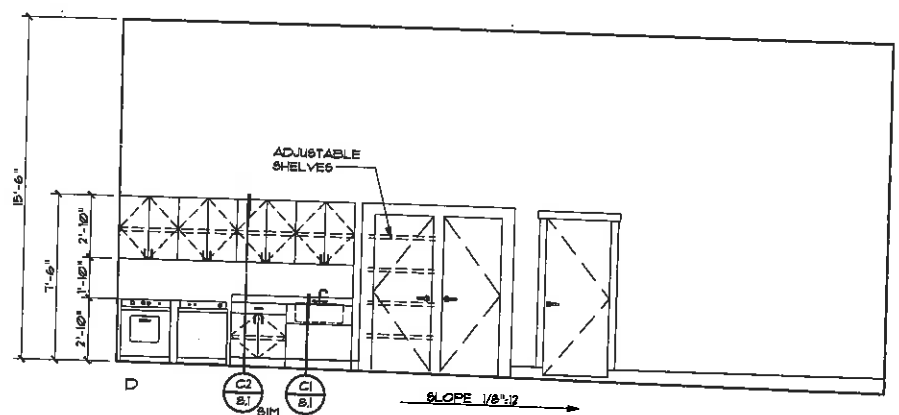
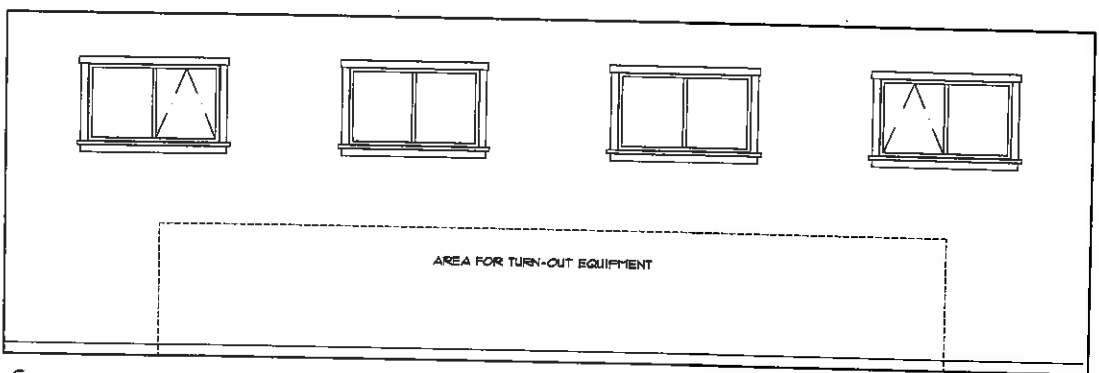
**B4 MOUNTING HEIGHTS**  
SCALE 1/4" = 1'-0"



**D1 APPARATUS BAY**  
SCALE 1/4" = 1'-0"



**C6 FASCIA**  
SCALE 3" = 1'-0"



**D6 RAKE**  
SCALE 3" = 1'-0"

COPYRIGHT 1998  
LOMBARD-CONRAD ARCHITECTS  
All rights reserved. Reproductions or  
use in any form or by any means -  
graphic, electronic, mechanical, etc.  
- without written permission of  
Lombard-Conrad Architects is unlawful  
and subject to criminal prosecution.

REGISTERED ARCHITECT  
3315  
SCOTT T. STEELE  
BEND, OREGON  
STATE OF OREGON

STEELE ASSOCIATES  
ARCHITECTS LLC  
686 NW YORK DRIVE, SUITE 150  
541.382.9867  
BEND, OR 97703  
info@steele-arch.com

SQUAW CREEK CANYON  
FIRE STATION  
17288 BUFFALO DRIVE SISTERS, OREGON  
INTERIOR ELEVATIONS

JOB NO. 9830101  
DATE JULY 15, 1998  
DRAWN BY BLH  
CHECKED BY STS  
REVISIONS DATE

SHEET NO.  
**A5.1**  
SHEETS