

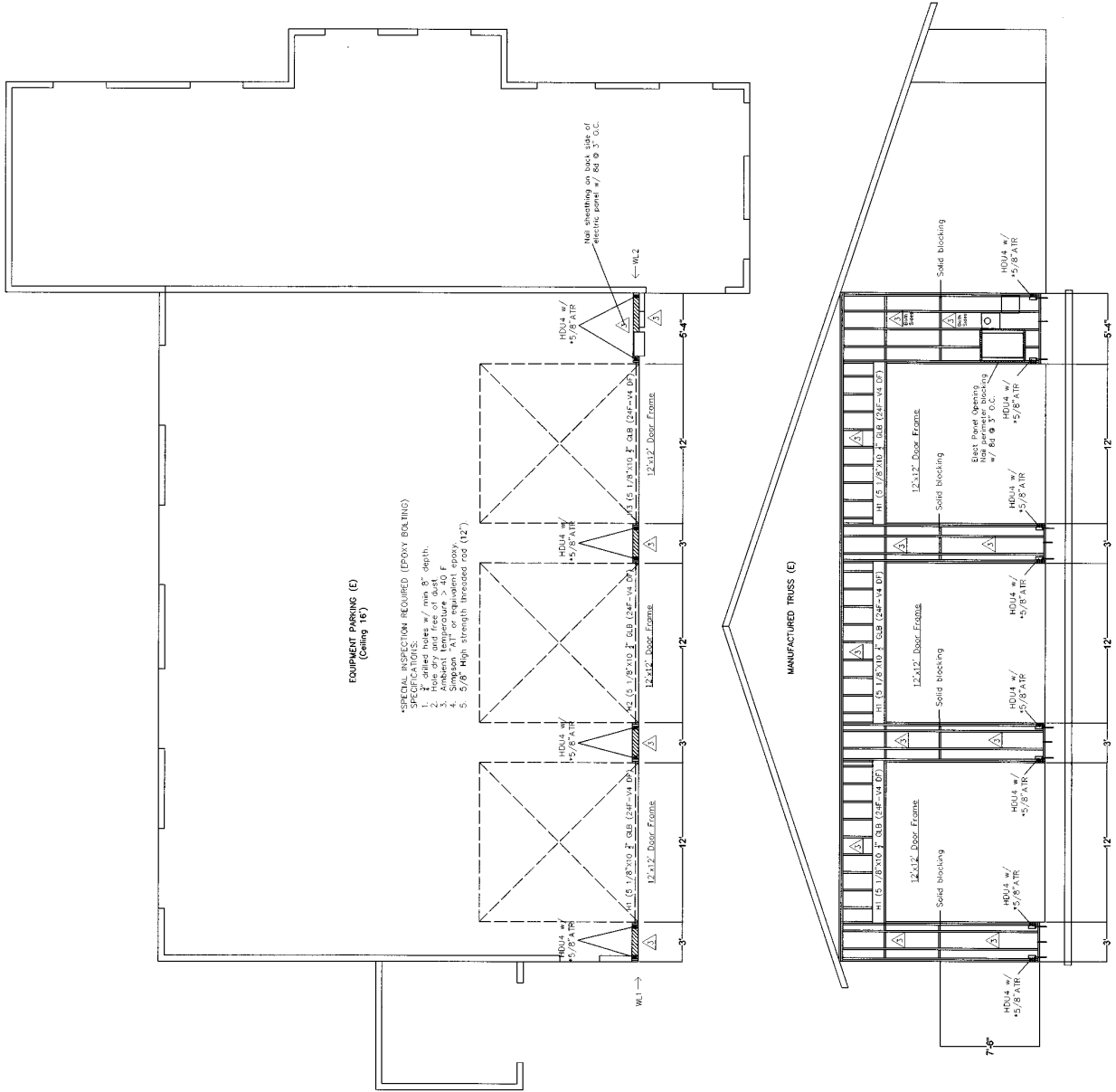


**BANTON ENGINEERING & DESIGN, INC.**  
 Shawn G. Banton, LPE  
 17077 Ocean Grove Drive, Salem Oregon 97309  
 Phone: (503) 778-1231, Email: shawn@bantoneengineering.com

Station 703 Remodel  
 17233 Buffalo Drive  
 Sisters, Oregon

REMODEL PLAN  
 17 0501010000A  
 1/4" = 1'-0"  
 Date: 5/21/19

15



**SHEAR ANALYSIS**

- Design: (Based on IBC)  
 1. Ultimate wind speed(RC IV): 115 mph, Exposure B [BC-ASCE7-10]  
 2. Design ground snow load 25 PSF (SL40)  
 3. Seismic Design: S<sub>DS</sub> = 0.14g (BC-ASCE7-10)  
 4. Seismic Design Category: Squaw Creek Canyon Fire Station (7/15/1998)

**SPECIFICATIONS:**

- Min. Bolt Size: 7/16" OSB or 1/2" Plywood nailed w/ 8d gph @ 6" O.C. edge and 12" O.C. field
- Minimum floor diaphragm: 4" Concrete
- Unless specifically noted, all exterior walls shall be sheathed one side with 7/16" OSB or 1/2" struct. plywood w/ min. ngl schedule of 8d gph nails @ 6" O.C. edge and 12" O.C. field
- Anchor, hold downs
- Bracing: all exterior sheathing horizontal joints
- All Simpson Hardware installed per Guidelines
- Special inspection required for epoxy bolt applications.

**SHEAR WALL SCHEDULE**

NO.	DESCRIPTION	CONNECTIONS
1	1/2" OSB or 1/2" CDX w/ 8d	25. Side plate to post, ngl blocking w/ 5/8" 10" J bolts @ 48" O.C. (See Note 1)
2	1/2" OSB or 1/2" CDX w/ 8d	26. Side plate to post, ngl blocking w/ 5/8" 10" J bolts @ 48" O.C. (See Note 1)
3	1/2" OSB or 1/2" CDX w/ 8d	27. Side plate to post, ngl blocking w/ 5/8" 10" J bolts @ 48" O.C. (See Note 1)
4	1/2" OSB or 1/2" CDX w/ 8d	28. Side plate to post, ngl blocking w/ 5/8" 10" J bolts @ 48" O.C. (See Note 1)
5	1/2" OSB or 1/2" CDX w/ 8d	29. Side plate to post, ngl blocking w/ 5/8" 10" J bolts @ 48" O.C. (See Note 1)
6	1/2" OSB or 1/2" CDX w/ 8d	30. Side plate to post, ngl blocking w/ 5/8" 10" J bolts @ 48" O.C. (See Note 1)
7	1/2" OSB or 1/2" CDX w/ 8d	31. Side plate to post, ngl blocking w/ 5/8" 10" J bolts @ 48" O.C. (See Note 1)
8	1/2" OSB or 1/2" CDX w/ 8d	32. Side plate to post, ngl blocking w/ 5/8" 10" J bolts @ 48" O.C. (See Note 1)
9	1/2" OSB or 1/2" CDX w/ 8d	33. Side plate to post, ngl blocking w/ 5/8" 10" J bolts @ 48" O.C. (See Note 1)
10	1/2" OSB or 1/2" CDX w/ 8d	34. Side plate to post, ngl blocking w/ 5/8" 10" J bolts @ 48" O.C. (See Note 1)
11	1/2" OSB or 1/2" CDX w/ 8d	35. Side plate to post, ngl blocking w/ 5/8" 10" J bolts @ 48" O.C. (See Note 1)
12	1/2" OSB or 1/2" CDX w/ 8d	36. Side plate to post, ngl blocking w/ 5/8" 10" J bolts @ 48" O.C. (See Note 1)
13	1/2" OSB or 1/2" CDX w/ 8d	37. Side plate to post, ngl blocking w/ 5/8" 10" J bolts @ 48" O.C. (See Note 1)
14	1/2" OSB or 1/2" CDX w/ 8d	38. Side plate to post, ngl blocking w/ 5/8" 10" J bolts @ 48" O.C. (See Note 1)
15	1/2" OSB or 1/2" CDX w/ 8d	39. Side plate to post, ngl blocking w/ 5/8" 10" J bolts @ 48" O.C. (See Note 1)
16	1/2" OSB or 1/2" CDX w/ 8d	40. Side plate to post, ngl blocking w/ 5/8" 10" J bolts @ 48" O.C. (See Note 1)
17	1/2" OSB or 1/2" CDX w/ 8d	41. Side plate to post, ngl blocking w/ 5/8" 10" J bolts @ 48" O.C. (See Note 1)
18	1/2" OSB or 1/2" CDX w/ 8d	42. Side plate to post, ngl blocking w/ 5/8" 10" J bolts @ 48" O.C. (See Note 1)
19	1/2" OSB or 1/2" CDX w/ 8d	43. Side plate to post, ngl blocking w/ 5/8" 10" J bolts @ 48" O.C. (See Note 1)
20	1/2" OSB or 1/2" CDX w/ 8d	44. Side plate to post, ngl blocking w/ 5/8" 10" J bolts @ 48" O.C. (See Note 1)
21	1/2" OSB or 1/2" CDX w/ 8d	45. Side plate to post, ngl blocking w/ 5/8" 10" J bolts @ 48" O.C. (See Note 1)
22	1/2" OSB or 1/2" CDX w/ 8d	46. Side plate to post, ngl blocking w/ 5/8" 10" J bolts @ 48" O.C. (See Note 1)
23	1/2" OSB or 1/2" CDX w/ 8d	47. Side plate to post, ngl blocking w/ 5/8" 10" J bolts @ 48" O.C. (See Note 1)
24	1/2" OSB or 1/2" CDX w/ 8d	48. Side plate to post, ngl blocking w/ 5/8" 10" J bolts @ 48" O.C. (See Note 1)
25	1/2" OSB or 1/2" CDX w/ 8d	49. Side plate to post, ngl blocking w/ 5/8" 10" J bolts @ 48" O.C. (See Note 1)
26	1/2" OSB or 1/2" CDX w/ 8d	50. Side plate to post, ngl blocking w/ 5/8" 10" J bolts @ 48" O.C. (See Note 1)
27	1/2" OSB or 1/2" CDX w/ 8d	51. Side plate to post, ngl blocking w/ 5/8" 10" J bolts @ 48" O.C. (See Note 1)
28	1/2" OSB or 1/2" CDX w/ 8d	52. Side plate to post, ngl blocking w/ 5/8" 10" J bolts @ 48" O.C. (See Note 1)
29	1/2" OSB or 1/2" CDX w/ 8d	53. Side plate to post, ngl blocking w/ 5/8" 10" J bolts @ 48" O.C. (See Note 1)
30	1/2" OSB or 1/2" CDX w/ 8d	54. Side plate to post, ngl blocking w/ 5/8" 10" J bolts @ 48" O.C. (See Note 1)
31	1/2" OSB or 1/2" CDX w/ 8d	55. Side plate to post, ngl blocking w/ 5/8" 10" J bolts @ 48" O.C. (See Note 1)
32	1/2" OSB or 1/2" CDX w/ 8d	56. Side plate to post, ngl blocking w/ 5/8" 10" J bolts @ 48" O.C. (See Note 1)
33	1/2" OSB or 1/2" CDX w/ 8d	57. Side plate to post, ngl blocking w/ 5/8" 10" J bolts @ 48" O.C. (See Note 1)
34	1/2" OSB or 1/2" CDX w/ 8d	58. Side plate to post, ngl blocking w/ 5/8" 10" J bolts @ 48" O.C. (See Note 1)
35	1/2" OSB or 1/2" CDX w/ 8d	59. Side plate to post, ngl blocking w/ 5/8" 10" J bolts @ 48" O.C. (See Note 1)
36	1/2" OSB or 1/2" CDX w/ 8d	60. Side plate to post, ngl blocking w/ 5/8" 10" J bolts @ 48" O.C. (See Note 1)
37	1/2" OSB or 1/2" CDX w/ 8d	61. Side plate to post, ngl blocking w/ 5/8" 10" J bolts @ 48" O.C. (See Note 1)
38	1/2" OSB or 1/2" CDX w/ 8d	62. Side plate to post, ngl blocking w/ 5/8" 10" J bolts @ 48" O.C. (See Note 1)
39	1/2" OSB or 1/2" CDX w/ 8d	63. Side plate to post, ngl blocking w/ 5/8" 10" J bolts @ 48" O.C. (See Note 1)
40	1/2" OSB or 1/2" CDX w/ 8d	64. Side plate to post, ngl blocking w/ 5/8" 10" J bolts @ 48" O.C. (See Note 1)
41	1/2" OSB or 1/2" CDX w/ 8d	65. Side plate to post, ngl blocking w/ 5/8" 10" J bolts @ 48" O.C. (See Note 1)
42	1/2" OSB or 1/2" CDX w/ 8d	66. Side plate to post, ngl blocking w/ 5/8" 10" J bolts @ 48" O.C. (See Note 1)
43	1/2" OSB or 1/2" CDX w/ 8d	67. Side plate to post, ngl blocking w/ 5/8" 10" J bolts @ 48" O.C. (See Note 1)
44	1/2" OSB or 1/2" CDX w/ 8d	68. Side plate to post, ngl blocking w/ 5/8" 10" J bolts @ 48" O.C. (See Note 1)
45	1/2" OSB or 1/2" CDX w/ 8d	69. Side plate to post, ngl blocking w/ 5/8" 10" J bolts @ 48" O.C. (See Note 1)
46	1/2" OSB or 1/2" CDX w/ 8d	70. Side plate to post, ngl blocking w/ 5/8" 10" J bolts @ 48" O.C. (See Note 1)
47	1/2" OSB or 1/2" CDX w/ 8d	71. Side plate to post, ngl blocking w/ 5/8" 10" J bolts @ 48" O.C. (See Note 1)
48	1/2" OSB or 1/2" CDX w/ 8d	72. Side plate to post, ngl blocking w/ 5/8" 10" J bolts @ 48" O.C. (See Note 1)
49	1/2" OSB or 1/2" CDX w/ 8d	73. Side plate to post, ngl blocking w/ 5/8" 10" J bolts @ 48" O.C. (See Note 1)
50	1/2" OSB or 1/2" CDX w/ 8d	74. Side plate to post, ngl blocking w/ 5/8" 10" J bolts @ 48" O.C. (See Note 1)
51	1/2" OSB or 1/2" CDX w/ 8d	75. Side plate to post, ngl blocking w/ 5/8" 10" J bolts @ 48" O.C. (See Note 1)
52	1/2" OSB or 1/2" CDX w/ 8d	76. Side plate to post, ngl blocking w/ 5/8" 10" J bolts @ 48" O.C. (See Note 1)
53	1/2" OSB or 1/2" CDX w/ 8d	77. Side plate to post, ngl blocking w/ 5/8" 10" J bolts @ 48" O.C. (See Note 1)
54	1/2" OSB or 1/2" CDX w/ 8d	78. Side plate to post, ngl blocking w/ 5/8" 10" J bolts @ 48" O.C. (See Note 1)
55	1/2" OSB or 1/2" CDX w/ 8d	79. Side plate to post, ngl blocking w/ 5/8" 10" J bolts @ 48" O.C. (See Note 1)
56	1/2" OSB or 1/2" CDX w/ 8d	80. Side plate to post, ngl blocking w/ 5/8" 10" J bolts @ 48" O.C. (See Note 1)
57	1/2" OSB or 1/2" CDX w/ 8d	81. Side plate to post, ngl blocking w/ 5/8" 10" J bolts @ 48" O.C. (See Note 1)
58	1/2" OSB or 1/2" CDX w/ 8d	82. Side plate to post, ngl blocking w/ 5/8" 10" J bolts @ 48" O.C. (See Note 1)
59	1/2" OSB or 1/2" CDX w/ 8d	83. Side plate to post, ngl blocking w/ 5/8" 10" J bolts @ 48" O.C. (See Note 1)
60	1/2" OSB or 1/2" CDX w/ 8d	84. Side plate to post, ngl blocking w/ 5/8" 10" J bolts @ 48" O.C. (See Note 1)
61	1/2" OSB or 1/2" CDX w/ 8d	85. Side plate to post, ngl blocking w/ 5/8" 10" J bolts @ 48" O.C. (See Note 1)
62	1/2" OSB or 1/2" CDX w/ 8d	86. Side plate to post, ngl blocking w/ 5/8" 10" J bolts @ 48" O.C. (See Note 1)
63	1/2" OSB or 1/2" CDX w/ 8d	87. Side plate to post, ngl blocking w/ 5/8" 10" J bolts @ 48" O.C. (See Note 1)
64	1/2" OSB or 1/2" CDX w/ 8d	88. Side plate to post, ngl blocking w/ 5/8" 10" J bolts @ 48" O.C. (See Note 1)
65	1/2" OSB or 1/2" CDX w/ 8d	89. Side plate to post, ngl blocking w/ 5/8" 10" J bolts @ 48" O.C. (See Note 1)
66	1/2" OSB or 1/2" CDX w/ 8d	90. Side plate to post, ngl blocking w/ 5/8" 10" J bolts @ 48" O.C. (See Note 1)
67	1/2" OSB or 1/2" CDX w/ 8d	91. Side plate to post, ngl blocking w/ 5/8" 10" J bolts @ 48" O.C. (See Note 1)
68	1/2" OSB or 1/2" CDX w/ 8d	92. Side plate to post, ngl blocking w/ 5/8" 10" J bolts @ 48" O.C. (See Note 1)
69	1/2" OSB or 1/2" CDX w/ 8d	93. Side plate to post, ngl blocking w/ 5/8" 10" J bolts @ 48" O.C. (See Note 1)
70	1/2" OSB or 1/2" CDX w/ 8d	94. Side plate to post, ngl blocking w/ 5/8" 10" J bolts @ 48" O.C. (See Note 1)
71	1/2" OSB or 1/2" CDX w/ 8d	95. Side plate to post, ngl blocking w/ 5/8" 10" J bolts @ 48" O.C. (See Note 1)
72	1/2" OSB or 1/2" CDX w/ 8d	96. Side plate to post, ngl blocking w/ 5/8" 10" J bolts @ 48" O.C. (See Note 1)
73	1/2" OSB or 1/2" CDX w/ 8d	97. Side plate to post, ngl blocking w/ 5/8" 10" J bolts @ 48" O.C. (See Note 1)
74	1/2" OSB or 1/2" CDX w/ 8d	98. Side plate to post, ngl blocking w/ 5/8" 10" J bolts @ 48" O.C. (See Note 1)
75	1/2" OSB or 1/2" CDX w/ 8d	99. Side plate to post, ngl blocking w/ 5/8" 10" J bolts @ 48" O.C. (See Note 1)
76	1/2" OSB or 1/2" CDX w/ 8d	100. Side plate to post, ngl blocking w/ 5/8" 10" J bolts @ 48" O.C. (See Note 1)

SCALE: 1/4" = 1'-0"